

FOR THE FUTURE



2022 ARKANSAS FFA FOUNDATION ANNUAL REPORT



DEAR ARKANSAS FFA MEMBERS, DONORS & SUPPORTERS,

Being a state officer is one of the most unique and rewarding opportunities the FFA has to offer on the state level. Each team has different experiences and, while this past year of service has posed its respective challenges and opportunities, our 2021-2022 Arkansas FFA State Officer team has loved every minute spent in our association jackets. Many people believe they understand everything that goes into being a state officer and serving the state association, however they only see the big picture.

There are countless small moments that created the beautiful mosaic of Arkansas FFA this year. It was the personal interactions with members, the friendships made across state lines, the rides in Big Ivory, camp traditions, phone calls, livestock shows, chapter visits, conventions, and so much more. We are blessed to be a part of such a dynamic association with some of the best members in the nation. I speak for my team when I say they are the reason we loved our time as a state officer so much. While the big picture of the FFA state office shows us professionally executing service-oriented leadership, the smaller details speak monumentally louder.

I truly believe that as a state officer team and an association, we have experienced a tremendous amount of growth and have taken leaps in the right direction. This past year of service still included some repercussions of the pandemic, however, we were able to build back stronger and reach a point that resembled normality. In hosting in-person events after two years, we were able to connect with the disconnected. Whether that was leadership camps at Camp Couchdale or the 95th Arkansas FFA State Convention, we were able to show that we are determined to strengthen agriculture and leadership in our communities and our members. We had the privilege of watching the renovation of the Fletcher Leadership Center, and are excited for the future improvements to Camp Couchdale for the betterment of our members and teachers!

Thank you is an understatement, for it has truly been an honor to serve the Arkansas FFA Association this past year and experience all the growth, love, and rebuilding this year had to offer. We can't wait to see all we accomplish in this upcoming year! Arkansas FFA, we love you, and hope you continue to change lives! Do all the things, have all the fun, and stay true to yourself!

MUCH LOVE,



**JOSIE KELLY,
ON BEHALF OF THE 2021-2022
ARKANSAS FFA STATE OFFICER TEAM**



2021 HIGHLIGHTS

Our state FFA officers welcomed hundreds of FFA members to Camp Couchdale for Arkansas Leadership Conference.



The Live Like Johnny Foundation and Kubota officially launched their Blue Jacket program in Arkansas!



The Third Annual Turkey Trot got many moving with their flocks after the Turkey Pardon with Governor Asa Hutchinson. We appreciate our poultry partners in Ag Education!



July



August

Chapter President Conference was a successful learning opportunity and Carlisle represented!

September



October

AYE and the Arkansas State Fair & Livestock Show were in full force! We are grateful for the many who support our members who have livestock SAE's.

November



December

State officers attended the Farm Bureau State Convention and celebrated Levi Jones of Harrisburg, Outstanding Young Teacher Award winner.

2022 HIGHLIGHTS

Our \$2 donation fundraiser was a success thanks to Williams Tractor, Calico Trailers and PK Grills!



Some of our young women attended the Women in Ag Conference and learned from other leaders in the industry.



The Fletcher Leadership Center renovation was substantially completed.



January



February

Arkansas led the nation in the total number of donors on Give FFA Day and more than \$50,000 was raised in one day!

March



April

Reese Mitchell, Lauren Massey, Gabbi Litchford, Evan Seay, Laykin Williamson and James Henderson were elected as the 2022-2023 state officer team.

May



June

The 2021-2022 state officer team visited ALC during the first week of the leadership camp.

THE NUMBERS

\$472,251
Total Donations
Donated to Arkansas
FFA in 2021

\$13,250
Total Scholarships Awarded

16

National
Officers

15,994

Arkansas FFA
Members

334

Agriculture
Educators

2,600

State
Convention
Attendees

212

FFA Chapters

GIVE FFA DAY

Batesville
Bentonville
Bentonville West
Bergman
Cabot
Calico Rock
Camden-Fairview
Cave City
Cedar Ridge
Center Ridge
Centerpoint
Clinton
Cotter
County Line
Crossett
Danville
Emerson
Fayetteville
Fouke
Genoa Central
Gentry
Greenbrier
Greenwood
Gurdon
Hamburg
Har-ber
Harrisburg
Hope
Huntsville
Jackson County
Jasper

Lafayette Co.
Lamar
Lincoln
Little Rock West
Magnolia
Mayflower
Melbourne
Mena
Mountain Home
Mt. Vernon-Enola
Newport
Piggott
Pottsville
Prescott
Quitman
Rector
Riverside
Rose Bud
Rural Special
Salem
Siloam Springs
Sloan Hendrix
Southside-Bee Branch
Springdale
Star City
Taylor
Vilonia
West Fork
White Hall
Wynne

\$53,300

Donated on
Give FFA Day

**UofA
CFFA**

#1 College in
Total Number
of Donors

#1

Total Number of
Donors in the
Nation

These FFA
chapters are
ON THE MAP
due to a
donation on
behalf of their
chapter!

2021 AMERICAN DEGREE RECIPIENTS

As the highest degree achievable in the National FFA Organization, the American FFA Degree shows an FFA member's dedication to his or her chapter and state FFA association. It demonstrates the efforts FFA members apply toward their supervised agricultural experience and the outstanding leadership abilities and community involvement they have exhibited through their FFA career.



Abagail McQuary, Maynard
Abby McMahan, Magnolia
Ainsley Purifoy, Camden-Fairview
Alex Jennings, Mountain Home
Ashlin Usrey, Alpena
Ashlynn Brewer, Genoa Central
Blair Ball, Stuttgart
Brittany Cochran, Maynard
Brooke Bradford, Clinton
Brooklyn Johnson, Quitman
Caelan Pearson, Nashville
Carlin Whaley, Magnolia
Christina Tolley, Quitman
Dalton Berry, Genoa Central
Dominic Pizzimenti, Mountain Home
Emily Fenton, Genoa Central

Ethan Angel, Centerpoint
Ethan Garza, St. Paul
Grace Hewat, Fayetteville East
Hannah Walters, Quitman
Jacob Adcock, Stuttgart
Janie Wilson, Bismarck
Kyleen Hewitt, Fouke
Matthew Dickerson, Genoa Central
Paige Barrett, Decatur
Raven Randolph, Hillcrest
Rayven P. Gariss, St. Paul
Riley Hoyle, Taylor
Robyn Gossard, Paris
Russell Sharpe, Mountain Home
Sarah Thomas, Concord



CDE AWARD WINNERS

Agricultural Communications
Lincoln

**Agricultural Technical &
Mechanical Systems**
Greenbrier

Agronomy
Mountain Home

Farm & Agribusiness Management
Mountain Home

Floriculture
Clinton

Food Science & Technology
Lincoln

Forestry
Cossatot River

Horse Evaluation
Quitman

Livestock Evaluation
Farmington

Meats Evaluation & Technology
Vilonia

Milk Quality & Products
Gentry

Nursery & Landscape
Greenbrier

Poultry Evaluation
Har-Ber

Veterinary Science
Har-Ber

LDE AWARD WINNERS

Conduct of Chapter Meetings
Harrison

Creed Speaking
Lincoln

Discussion Meet
Harrison

FFA Knowledge
Vilonia

Job Interview
Harrison

Extemporaneous Speaking
Melbourne

Parliamentary Procedure
Clinton

Prepared Public Speaking
South Side





TEACHER SPOTLIGHT

CARLY BOKKER

Carlisle FFA

How many years have you taught?

I will start year seven in January 2023. I was a mid-year start in 2017.

What's your favorite class to teach?

I really love plant science, it's what I majored in while working on my Bachelor's and Master's degree. However, we have recently added Animal Science and I have learned so much right along with my students. I've been able to extend our farm into the classroom which has been great for the students. The barn is my happy place!

What's your favorite activity?

I love watching my students raise animal projects, we are only in year 3 of having a livestock show team. The growth from year one for them has been huge... And for me too! If you stop learning, you stop growing. Seeing them step into the county fair ring in September makes all that hard work and hours on the road worth it!

Why did you become an Ag teacher?

The 100% honest answer is that I wanted to be on the same schedule as my own kids. When I was in college if you would have told me I would use my degree to work with teenagers every day, I would have run the other direction. However, God had big plans when he pulled me into an interview over 6 years ago and I haven't looked back since. I went into my classroom and created my own mission field. I knew I was called to that very spot, and I've poured it all into our program.

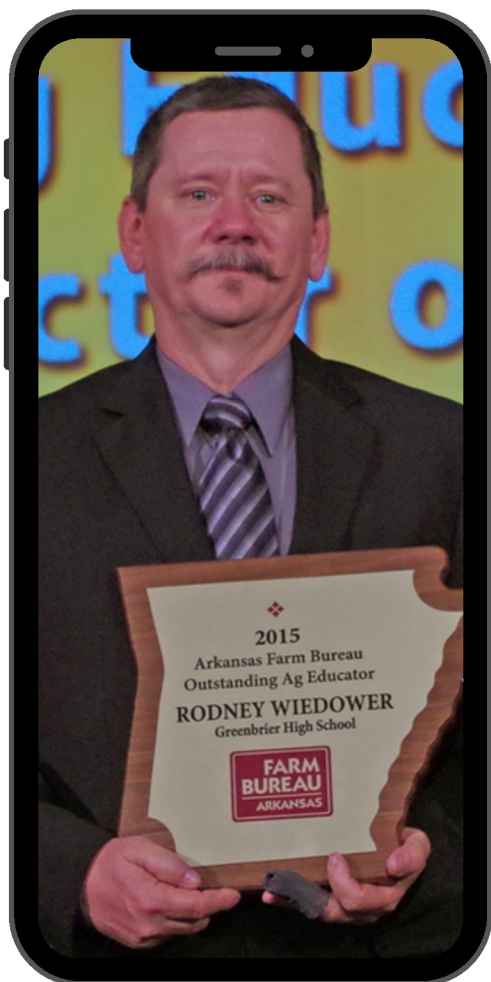
How have you seen your students benefit from FFA?

Almost every student I teach, I have for three years in a row. Not many teachers can say that. We develop a bond like no other, and my kids that I haul all over the state know they can call me at any time. This bond carries on past graduation and I've watched so many go off into the workforce or college successfully. I have no doubt FFA made it possible for them to be where they are now.

Why is it important to support your program locally and the State FFA Foundation?

We are so blessed in Carlisle to have the support of our small town, we are able to provide so many opportunities for our students! Our state foundation has also provided incredible support to our students as we have become more involved in state-wide activities like ALC, CPC, and State Convention. The much-needed renovations at Camp Couchdale are creating a long-lasting impact on students by providing amazing facilities. The kids benefiting are the future of Arkansas Agriculture and investing in them now is our greatest investment.





TEACHER SPOTLIGHT

RODNEY WIEDOWER

Greenbrier FFA

How many years have you taught and where?

One year at Riverside, one year at Bay, 18 years at Quitman, and 15 years at Greenbrier with a total of 35 years teaching.

What's your favorite class to teach?

My favorite classes to teach are Animal Science and Leadership, but I so enjoy teaching a student anything that they are excited about and I love watching kids get better at anything and grow as a person.

What's your favorite activity?

I love working with students and their livestock projects and watching them work hard and become successful at them. I like training CDE/LDE, but my favorite is Parliamentary Procedures.

Why did you become an Ag teacher?

I truly believe life is better if you enjoy your job. I can't really explain why I became an Ag teacher but in high school being in agri and doing FFA activities was what I enjoyed. Looking back on my career I now know that this is what God wanted me to do. It's almost like it was a calling. I hope I can be a positive influence and a difference in my students' lives. I can truly say that I have really enjoyed my job.

How have you seen your students benefit from FFA?

I have watched students that thought they couldn't learn that they could. I had a student as an 8th grader cry because he "couldn't" give a set of livestock reasons and he wanted to quit. Four years later he was high individual at the state contest and his team was the state champions. He went on to judge livestock in college and earn his doctorate degree in animal science and now has a very successful career in animal nutrition. I have 100 stories like that that I have witnessed FFA being life-changing for them. Everyone needs a place in high school to belong and succeed. I feel like FFA can offer that.

What advice do you give your students?

My advice to students is never limit yourself, and always challenge yourself to be better every day. Find a career that you enjoy and be good at it. My daddy always told me, "I don't care if you want to pick up rocks just be the best rock picker upper you can be." Students may not be the smartest or most talented, but you can always be the hardest worker.





SPONSOR SPOTLIGHT

ABIGAIL REITH

**Senior Technical Services
Veterinarian at Zoetis**

Why is supporting agriculture education and the Arkansas FFA important to you personally and professionally?

It's important for helping shape future young leaders, especially in agriculture – a field that is so vitally important to all of us. As a poultry veterinarian for Zoetis, the agriculture industry is an integral part of my life. I completed my undergraduate degree at the University of Arkansas, veterinary school at the University of Missouri, and a post-doctorate master's program at the University of Georgia. Each of these educational experiences enabled me to chase my dreams and land a veterinarian role in food animal production medicine. I can't express the value of my education and its impact on my career in agriculture and veterinary medicine. I hope that sharing my experiences with Arkansas FFA members will positively impact them to consider a career in the agriculture industry. The agriculture education classroom and hands-on experiences through FFA programs help forge career paths for students much earlier than many other fields of study. Early exposure to the intricacies of the agricultural industry before college can lead agriculture enthusiasts to opportunities that will help secure and sustain our food

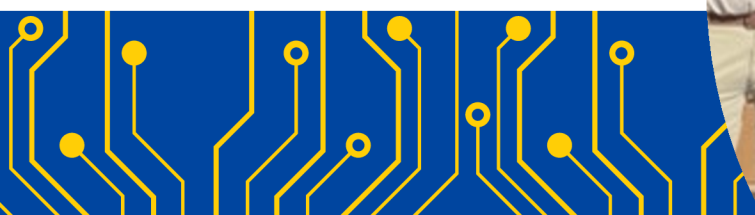
supply as our world population increases. As the general public is getting farther and farther away from understanding how their food is produced, it increases the need for agriculture education and supporting those that have a passion for sustaining food production. At Zoetis, we are working hard to support ways to help engage underrepresented populations with agricultural education.

What is the value of your relationship with the FFA? Why would it be important for an animal veterinarian to partner with our educational efforts?

As a veterinarian in the agriculture industry, I enjoy sharing my career journey to help educate FFA members about what opportunities are out there. The poultry industry, including Zoetis, is eager to hire hard-working and dedicated young talent, and I hope to encourage FFA students to consider careers in poultry science, poultry medicine or any other animal health field.

Are there any challenges in your area of work that you hope will be solved by FFA members?

The poultry industry has significant labor challenges due to growth and the need to expand innovative technology into the marketplace to help supply meat protein and eggs for our growing population. The poultry industry would benefit greatly from FFA members going into a career in the poultry industry either right out of high school or by completing agriculture degrees at two- and four-year colleges. We need young, passionate talent to help us, and by partnering with FFA we can bridge this critical gap to prepare young talent for rewarding agriculture careers.



SPONSOR SPOTLIGHT

CARSON HORN

**Public Relations Director at
The Communications Group**

What value do you place on agriculture education and the Arkansas FFA and why do you choose to support the Arkansas FFA Foundation?

As a former Oklahoma 4-H and FFA member with parents who both hold a Ph.D. in Ag-Ed, I have experienced the value of agriculture education firsthand. The experience of being involved in my local FFA chapter had a significant impact in shaping the person and professional I am today by equipping me with soft skills and lessons that I have benefitted from in every step of my life. To this day, some of my closest friendships are those that were cultivated in the barn or on a bus heading toward an FFA event. It is exciting to see traditions continue in my home state of Oklahoma, and it encourages me to witness that same enthusiasm shared here in my new home of Arkansas. As an FFA member, I appreciated the support I received and it has been a priority of mine to pay that support forward, which I am humbled to have the opportunity to do in my current role.

What is the value of your relationship with FFA, and how does this play into your career path?

Growing up in Oklahoma, I obviously was not a member of Arkansas FFA. Fortunately, though, FFA is an organization that transcends borders. When two FFA members meet, regardless of where they come from, they immediately have a shared connection to jumpstart a rapport. This is exactly how it is for me to connect with FFA members and alumni in Arkansas. My career has been built on roles requiring a high level of interpersonal interaction. In many cases, FFA is the common denominator that helps me lay a solid foundation when forging new relationships. Even in situations when that common bond is not shared, the confidence I developed in FFA allows me to strike up and carry meaningful conversations that support positive interactions.

How do you see Arkansas FFA shaping the future of agriculture?

Over the years I've become acquainted with several ag teachers, advisors, association leaders and members of Arkansas FFA. What I find unique about these different groups despite their range in age, position and stage of life, is that they all share three qualities: a love of agriculture, an inherent sense of mentorship, and an admirable drive to excel. The future of the agriculture industry is dependent on fresh talent. Year after year I see Arkansas FFA members and former members entering the workforce, each class more talented than the last. Arkansas FFA has established a culture that fosters an appreciation for the ag industry, an environment that encourages learning and sharing knowledge, and an atmosphere that inspires members to do their best. Because of this culture and the people who keep it alive, I know that the future of agriculture will grow to be more innovative and advanced than ever before.



ALUMNI SPOTLIGHT

PAUL WISE

Hackett FFA

What was your FFA experience like in high school and how did it shape you into the person you are today?

My class of 7 boys (all of whom joined FFA and turned out pretty darn good and successful) were in AG class together. Our AG teacher, Charlie Vincent, got FFA started in our school. It's been so long ago, that my memory is fuzzy on our actual meetings, but what does stand out in my memory is our summer camp at Camp Couchdale, various field trips to Arkansas Tech in Russellville, and trips to farms where we participated in castrations, dehorning, pig slaughters and sheep shearing. FFA provided opportunities to us teenage boys (sorry, there weren't any girls, in those

days, the girls had home economics) that would have never been possible in just our school's AG program. My greatest memory of being in FFA is Camp Couchdale! There were the Arkansas/Oklahoma Fairs and Livestock Shows which our chapter was involved in, but nothing was more impressive or enjoyable than that one summer at Camp Couchdale. My school didn't get us connected to Arkansas FFA's Camp Couchdale until my senior year in school, which is why I only got to attend one summer. But what a summer!

SCAN THE QR CODE TO READ THE REST OF MR. WISE'S STORY

STEP 1



OPEN
YOUR
CAMERA
APP.

STEP 2

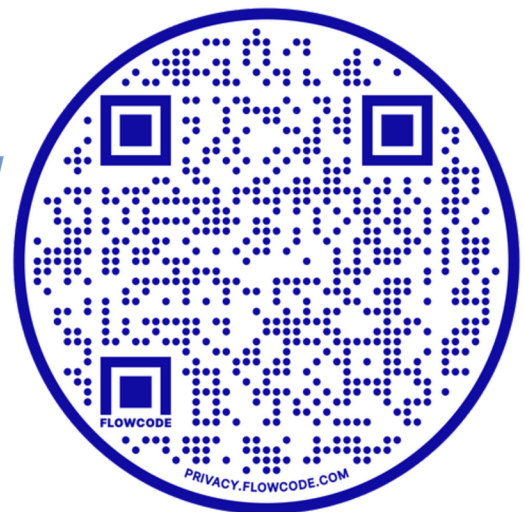


AIM
CAMERA
AT THE QR
CODE.

STEP 3



TAP THE
POP-UP
BANNER TO
OPEN THE
FILE.



2022 STAR FARMER

The Star Farmer is awarded to the FFA member that demonstrates the top production agriculture supervised agricultural experience in the state. The member must demonstrate outstanding achievement active FFA participation and an exemplary scholastic record.



"My livestock production SAE focused on raising crossbred Boer goats for competition in market shows around the country. I also raised market goats, lambs and hogs and worked with my family's commercial cattle herd. The goal of my SAE was to gain a better understanding of the livestock industry and to equip myself with the skills I would need to raise quality stock later in life. Through the project, I learned a great deal about the industry as a whole and gained a greater understanding of the tools used to produce quality stock. I was able to utilize these tools to bring artificial insemination and embryo transfer to my doe herd where I learned to select top breeding stock bucks with show quality attributes to improve my herd."

What inspired your SAE?

"I was naturally interested in this specific project because of my upbringing on a small farm producing market goats and crossbred cattle. I had grown up in meat goat production and started showing market goats at a young age. I was always fascinated by the high-quality show animals that the top breeders could produce, compared to the average meat animal. I think this is what really drove me to try my hand at creating a quality herd of livestock stock using modern tools and technology. Through my SAE project and FFA activities, I have also learned the importance of hard work and personal responsibility. I have gained confidence and leadership skills that have prepared me for my future in the agriculture industry."



JACK HOYLE

2022 STAR IN AG PLACEMENT

The Star in Agricultural Placement is awarded to the FFA member with the top agricultural placement supervised agricultural experience in the state. The member must demonstrate outstanding achievement, active FFA participation and an exemplary scholastic record.



"I'm from Decatur, Arkansas, and I'm the daughter of Melissa and Leonard Funk. I'm the baby of six siblings who all grew up around horses. My job at NWA Polo Club under Bob Koehler, a professional polo player, and his wife Susan inspired my SAE project which is based on equine placement.

Through my Supervised Agricultural Experience, I've learned the importance of proper conditioning and nutrition. I have slowly worked my way up within my job, starting as a farmhand and now becoming a polo groom. This past-winter Bob got a polo prospect we call "Annie." Annie is a five-year-old, off-the-track thoroughbred mare that I had the opportunity to help train. All of these unique experiences will make me more knowledgeable when caring for or training my current and future horses."



What inspired your SAE?

"It was natural to want to be in a job involving horses, seeing that I've been around horses my entire life. I started working for Bob and Susan when I was 14-years-old after the Benton County Fair. I messaged Susan, asked for the job, and have been working for them ever since! The opportunities that they have opened up for me through this job have been and are greatly appreciated. Working under a horseman like Bob has taught me so much and I learn something new every day from both Bob and Susan."

KAITLYN FUNK

2022 STAR IN AGRIBUSINESS

The Star in Agribusiness is awarded to the FFA member with the top non-production agribusiness supervised agricultural experience in the state. The member must demonstrate outstanding achievement, active FFA participation and an exemplary scholastic record.



"In my SAE, I am involved in the honey harvesting process, as well as creating a no-waste operation through my small business, Honey Babees. After honey and beeswax are gathered from local hives on my family farm, I then use materials from the harvesting process that would typically be thrown away to create all-natural lip balm, body butter and hand soap that I advertise to my community. Throughout my SAE, I have learned how to securely operate a small business, and have gained a better understanding of the significance of pollinators in our state. My SAE has allowed me to engage in very meaningful and informational conversations with my community, customers and other agriculturalists."

What inspired your SAE?

"When I saw materials that were not used after being harvested from my brother's beehives, I knew I wanted to find a way to create a no-waste harvesting process. In doing so, I have learned how to be increasingly innovative in using natural resources. My SAE has given me opportunities to tell others about my experiences with this particular part of agriculture, as well as raise awareness on supporting the future of local agriculture. My SAE allows me to do things that I truly enjoy: find solutions to local issues, advocate for agriculture and the FFA, meet new people, and have meaningful conversations."

HANNAH HARRISON



2021 SCHOLARSHIP RECIPIENTS

Farm Credit Services of Western Arkansas Scholarship Recipients

Abbey Aulds, Harrison

Kristin Lehmann, Nemo Vista

Jack Warnock Memorial Scholarship Recipient

Hannah Kimmer, Batesville

Marvin Vines Memorial Scholarship Recipient

William Martin, Norfork

Landy Nelson Doyel Memorial Scholarship Recipient

Brittney Stengel, County Line

I.L. Ish Stivers Memorial Scholarship Recipient

Jacob Birkhead, Batesville

Jack Justus Memorial Scholarship Recipient

Taylor Hoover, Vilonia

Orval Childs Memorial Scholarship Recipient

Kelcy Frachiseur, Cossatot River

Lee Griffith Memorial Scholarship Recipient

Abby Bone, Clinton

Arkansas FFA License Plate Scholarship

Abbigail Hagans, Clinton

Abby Stockton, Sheridan

Andrew Davis, Paris

Blakely Williams, Pottsville

Cason Frisby, Fayetteville

Christian Hunter, Genoa Central

Dylan Lamon, Genoa Central

Emily Gunter, Fayetteville

Ethan Martin, Bergman

Garrison Crane, Lake Hamilton

Jalyn Bull, Two Rivers

Kinsley Williams, Mount Vernon-Enola

Latreal Neal, McCrory

Lauren Massey, Paris

Martha Smith-Gomez, Decatur

Ruthie Reaves, Sheridan

Savanna Bray, Bergman

Troy Gray, Booneville

Zoe Patterson, Genoa Central



PROFICIENCY AWARD WINNERS

Ag Mechanics, Design and Fabrication

Zeke Stephens, Har-ber

Ag Mechanics, Repair/Maintenance

Mason Whitby, McCrory

Ag Processing

Hannah Harrison, Jasper

Ag Sales

Isabella Sedrick, Har-Ber

Agricultural Education

GG Diaz, Har-Ber

Diversified Livestock Production

James Henderson, McCrory

Diversified Crop Production

Chad Veazy, McCrory

Diversified Horticulture

Sandra Alvarado, Har-ber

Diversified Livestock Production

Addison Bacchus, Lamar

Equine Science, Entrepreneurship

Madi Wood, Cotter

Equine Science, Placement

Kaitlyn Funk, Decatur

Fiber Crop Production

Brayden Scarbrough,
McCrory

Forage Production

Jon Rogers, Farmington

Goat Production

Maggie McDonald, Magnolia

Outdoor Recreation

Lane Miller, Lamar

Service Learning

Presley Shelton, Har-ber

Sheep Production

Addison Harlow, Prairie
Grove

Small Animal Production/Care

Emily Bailey, Har-ber

Specialty Animal Production

Isabella Sedrick, Har-ber

Specialty Crop Production, Placement

Zoe Baucum, Fayetteville

Swine Production

McKayla Williams,
Fayetteville

Turf Grass

Landen Headley, McCrory

Veterinary Science

Emily Gunter, Fayetteville

Wildlife Production/Management

Ellie Benson, Har-ber



DEAR ARKANSAS FFA MEMBERS, DONORS & SUPPORTERS,

Three years ago, when I began this role as the Foundation Director, I was marginally terrified. With just a handful of names, organizations and contact information and absolutely zero experience in raising support for anything bigger than the Faulkner County Bred Heifer Show, I really didn't know what to do other than what I'm good at, and that is snooping. Ask anyone in my immediate family, and they will tell you the brutal truth about me: if there is a gift under the Christmas tree with my name on it, I'm most likely going to open it. An older cousin passed this skill along to me while I was a bored 10-year-old girl traveling from Newark to Jonesboro in the backseat of our car. We'd taken my Granny Barber to exchange gifts with her sister, and what's a kid to do on a long car ride besides learn how to pick the tape on presents to see what's inside? So, I applied this 'peeking' skill and began looking at other successful State FFA Foundations to see what they do.

Fast forward a few years, and I'd give anything to take a peek and look inside the crystal ball to see what Arkansas FFA Foundation will look like in five or ten years. What I know is that because of the incredible support, momentum and interest we see in Agriculture Education, without a doubt, the best is yet to come for the Arkansas FFA Association. Look at the growth we've had in the past three years! Our supporters recognize the role played by a determined FFA Advisor. Our alumni credit the FFA with a leading role in their personal success. Our past state FFA officers know they were blessed with the best FFA has to offer. And, our farmers, foresters and ranchers are beginning to see that Arkansas FFA is the very best insurance policy in which to invest if they truly desire to have a sustainable future. It is because of every \$10 monthly gift, the crazy Give FFA Day success and the sacrificial and loyal support of the giants in our industry that our teachers and students have enjoyed a great year. Your giving is what sustains the future of agriculture.

Thank you simply isn't enough. You're helping unwrap opportunities for our FFA members which will grow them into the leaders we need to make a positive impact on their families, communities, Arkansas and beyond.

SINCERELY,

Jennifer Cook

**JENNIFER COOK
DIRECTOR, ARKANSAS
FFA FOUNDATION**



CURRENT NEEDS



Construction of a fully ADA-accessible Leadership Lodge to meet the privacy needs of special guests which can also be used by our state FFA officers or for hosting small retreats.



Address sustainable energy and efficiency needs with modern HVAC and water heaters as well as renewable energy components.



Modernize the cafeteria to meet student and teacher capacity, needs such as updated flooring, etc.



Fully renovate the sea wall, walkways and swinging bridge so that our lakefront is fully accessible for all with a beautiful patio area. Further develop the 25 acres across the lake with chip-sealed walking pathways, a swimming beach and add additional camper experiences that could include new paddle boats, a rope course, paddle boards and a volleyball court.



Fully renovate cabins 21-24, replace blinds in cabins with curtains, refresh old bedding with new mattresses where needed and update landscaping and flower beds across camp. Address flooding concerns in the basement and modify bathroom spaces across camp to enhance privacy needs.



Refurbish Mr. Jack's Cabin, thus preserving its purpose and usefulness for decades to come.

FOUNDATION PLUS CHAPTERS

The support given by our Foundation Plus chapters is invaluable. They recognize that Camp Couchdale and the overall impact of the Arkansas FFA is strengthened by their investment. These are the chapters that take full advantage of the multiple fundraising opportunities that are provided by the Foundation, and/or simply support sacrificially in a way that supports the work of our organization.



Guidelines

Arkansas FFA Chapters are recognized as a Foundation Plus Chapter, if they contribute the minimum amounts outlined below to the Arkansas FFA Foundation.

Chapter Size	Number Enrolled in Ag-Education Courses	Minimum Contribution
Small	10-75	\$500
Medium	76-150	\$750
Large	151 or More	\$1,000

Bentonville
Bergman
Bismarck
Cabot
Camden-Fairview
Carlisle
Cave City
Cedar Ridge
Clarksville
Cossatot River
County Line
Emerson
Greenbrier
Greene County Tech
Gurdon
Harrisburg
Huntsville
Kirby
Lafayette County
Lake Hamilton
Mansfield
Mena
Morrliton
Mountain Home
Newport
Prairie Grove
Prescott
Quitman
Rural Special
Springhill
Star City
Vilonia
Wynne

Recognition

Foundation Plus Chapters receive the following recognition or benefits:

- Early registration to Arkansas FFA events including the Arkansas State Convention, ALC, 360 and Greenhand Conferences
- Recognition at the Arkansas FFA State Convention
- One Leadership Scholarship to Arkansas Leadership Conference worth \$150

Contributions must be made by March 15 of the current year to be recognized at the Arkansas FFA State Convention and receive the ALC Leadership Scholarship.



RIBBON CUTTING & AUDITORIUM DEDICATION



On July 13, 2022, the Arkansas FFA Foundation dedicated our renovated Fletcher Leadership Center to the FFA advisors who have gone before us and to the ones who will continue the mission of the FFA organization. Specifically, we recognized Marion Fletcher who is the namesake of this facility, and we celebrated his service to the Arkansas FFA. We also recognized Troy Buck who dedicated 55 years to educating young people about the industry of agriculture. Because of the generosity of the Arkansas Farm Bureau Federation, which secured naming rights for the auditorium in Mr. Buck's honor, the foundation will be able to memorialize the impact he has made on thousands of young people during his lifetime.



CORPORATE DONORS

\$40,000+



\$20,000+



Electric Cooperatives
of Arkansas



FARM CREDIT
ASSOCIATIONS OF ARKANSAS



\$10,000+

Ben J. Alzheimer Foundation
Farm Credit Mid-South
Farmers Bank & Trust
Greenway Equipment
Mark's Machinery
Nabholz
Wieghat Graphics

\$5,000+

Arkansas Farm Bureau Foundation
Blue & Gold Sausage Co.
Cabe Foundation
Calico Trailers
Cavender's
Entergy
Farm Credit of Western Arkansas
Gold Crest Farms

**Special thanks to the Poultry Federation for
sponsoring the 2021 AR FFA Turkey Trot!**



\$2,000+

Arkansas 811
Arkansas Beef Council
Arkansas Elite Welding Academy
Arkansas Soybean Promotion Board
ARKUPS
AVATA
BWI Companies
CEV Multimedia
Fresh Country
Green Bay Packaging
Intimidator Group
Koontz Electric
MFA Oil
National Ag Law Center
Potlatch Deltic
Rebsamen Fund
Simmons Bank
Simmons Foods
The Poultry Federation
Westwood Gardens
Zoetis

\$1,000+

Arkansas Vet Medicine Association
Arkansas Vet Tech Association
Arvest Bank
Axles Plus
Ducks Unlimited
Ferguson Family Foundation
J&J Lumber Company
Ritter Communications
Seitz Fundraising
Williams Equipment

\$500+

Ag Heritage Farm Credit
Arkansas Cattlemen's Association
Arkansas Forestry Association
Arkansas Rice Council
Bloom for Gold
Chore-Time
Hot Spring County Farm Bureau
Olds Foundation
Polk County Farm Bureau
Purina Feeds
Reliable Poultry

***Donations made between July 1, 2021 - June 30, 2022**

CORDUROY CLUB MEMBERS

Friends of the FFA

Alex Dykes
Amanda Elder
Ann Speigel
Bauschlicher Brothers
Billy/Shana Pharr
Brenda Waller
Brian Ainsworth
Brian Peters
Bruce Cozart
Caleigh Watlington
Carol Van Scyoc
Carroll Mercer
Casey Beavers
Casey Simpson
Charles Collins
Charm McClendon
Chase McCormick
Chris Bauer
Chris Dews
Cindy Cole
Clint McCance
Courtney Chapman
Crystal Holliday Tucker
Cyndi Hankins
David & Karen Hays
David and Pam Cunningham
David Morris
David Woodall
Dean Livingston
Deanna Easton Norman
Dikelin Evans
Donald Westerman
Emilee Vaught
Emily Hansen
Emily Rodgers
Evelyn Linvell
Floyd Morris Jr
Foster Thompson
Gary Lawrence
George Stevens
Gerald Craig
Greg Davis
Hannah Eveld
Howard Ritchie
J.M. Rowe
Jacquie Albright
Jaime Hartpence
Jan Workman
Jane Coleman
Jared Richey
Jarrod Eddington
Jayme Jeane
Jeanie Fields
Jeanne Baumbeck
Jeff and Missy Sugg
Jeff Barber
Jennifer Haddock
Jerry Fielder
Jesse and Dovie Mitchell
Jessica Tippitt
Jim Wilcox
Jimmie Tucker
Jimmy Driggers
Joann Frazier
John & Sara Crangle
John Haltom
Josie Kelly
Julie Kelly
Justin Reynolds
Kaleb Mason
Kalena Gay Buck Hughes
Kallie Hoover
Karen Woodward
Kari Davis Lamkin
Karie Dillinger
Kate Messersmith
Katie Teague
Kayla Hebert
Kelley Chaney
Kellie Warren
Kelly Boyd
Ken Knies
Kevin & Michelle Rieff
Kevin McGilton
Kim Rhodes
Kimberlie Harris
Kimberly & Ella Claire Moore
Kisha Faulkner
Larry and Diana Sanders
Laurie Bauer
Leigh Wineland
Leslie Pedigo
Lutricia Workman
Mary McNeely
Matt McKee
Matt Ward
Meredith Matyja
Michael Teague
Michael Vanwinkle II
Mickey Buchanan
Mindy Linvell
Molly Cox
Monte Fain
Morgan Seymore
Nancy Hannon
Richard Helms
Ricky Hart
Rob Eldridge
Robert McDonald
Robin Harlow
Rodney Wiedower
Ryan Maloch
Sandra Nall
Sarah Hale
Shane Fields
Shannon Shearer
Shaun (Pete) Bauer
Sherry Dodd
Stephanie Seymour
Tammie Dobbins
Taylor Wiedower
Terry Petrus
Thomas Watson
Tim Nolan
Tina Poag McMechen
Todd Sturgill
Traci Henderson
Troy Thompson
Tyler Davis
Tyler Granberry
Victoria Maloch
Vince Day
Wauleai Huckabee
Zac & Victoria Rogers

Blue Jacket Believers

Angie Hewat
Bradley Hughes
Carly Bokker
Carol Johnson
Carson Horn
Chris Bacchus
Chris Estep
Christy Hoyle
Cody Burkham
Cummings
Denise Trotter
Donald and Danny Dews
Eric Hughes
Gammie Moore
Jack Downey
James "Latour, Sr."
James Williams
Jason Binz
Jason Wagner
Jay Glass
Jeremy Allen
Jimmie Tucker
Jodi Dyer-King
John Jones
Johnathan Lewis
Keith Noble
Kisia Weeks
Kourtnee Holland
Lacey Harris
Larry Lairmore
Lauren Mitchell
Lindsey Holtzclaw
Lori Bigelow
Macy Braswell
Marcus Crawley
Marion Fletcher
Patti Priest
Renea Baker
Robert & Patty Fulton
Robert Crawley
Ron Koch
Ronald J Koch
Susan Johnson
Taylor and Justin Wiseman
Terra Purifoy

Bleed Blue & Gold

Ben Gander
Danny Williams
Frank Fowler
Jade Cameron
Jennifer Cook
Kassy Whitener
Linda Laughlin
Reggie Galloway
Rex Martin
Rhianna Wagner
Rob Roedel
Ronnie Duckett
Shelby Vanoven
Susan Sanders
Susan Wallace
Tom Huls

Rising Sun Supporters

Curt Bradbury
James Cannon
Jamie Barber
John Holcomb
Melissa Browning
Michelle Clark
Nina Crutchfield

Legacy Investors

Blake Morgan
Darrel Way
Kent Mathis
Paula Poag
Todd Martin

President's Circle

Bruce Maloch
Tyler & Monica Griffin



BLUE JACKET SOCIETY

The Blue Jacket is the great equalizer of FFA. No matter where you are from, how much money you have, or who your parents are, the blue corduroy jacket allows every FFA member to create their own identity; opening the doors to future success in this organization. To commemorate the experience we all shared in the blue jacket the Arkansas FFA Foundation developed the Blue Jacket Society. This is a unique opportunity to forever encase your part in that inspiring task. A donation of \$2,500 allows for your jacket, or the jacket of someone you know, to be displayed in the newly renovated Marion D. Fletcher Center.

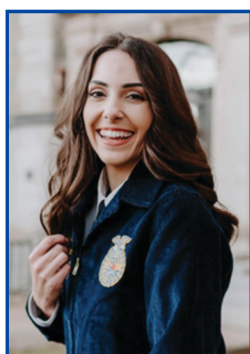
WHO CAN BE NOMINATED?

- Memorialize your FFA experience.
- Honor a special friend's love for FFA as a graduation or birthday gift. Or, consider this as a lasting tribute instead of flowers.

WHAT HAPPENS NEXT?

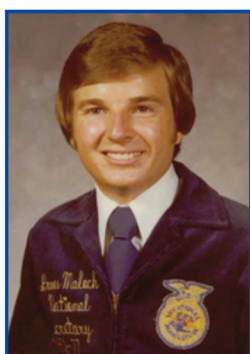
Once the gift is complete, the Arkansas FFA Foundation will make arrangements to pick up your jacket, or the jacket of the one who is being honored. In the event this is a tribute nomination, we can order a new jacket since some families may not want to part with the jacket that belonged to their loved one. We will contact the honoree or family who will provide a complete list of contributors for the Blue Jacket Society and will request 10-12 photos to create a mini-slide presentation for the inductee ceremony at the Arkansas State FFA Convention. The jacket will then be placed in the Alumni Room inside the Fletcher Leadership Center.

BLUE JACKET SOCIETY INDUCTEES



Anna Mathis

- Valley Springs FFA
- State FFA President 2019-2020
- National FFA Secretary 2020-2021



Bruce Maloch

- Emerson FFA
- State FFA President 1974-1975
- National FFA Secretary 1976-1977



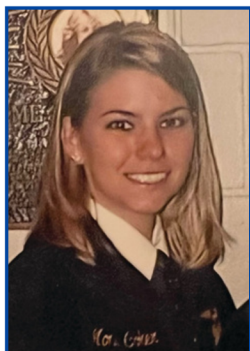
JERICK "HUTCH" HUTCHINSON

- Fayetteville FFA 1991-1995
- Huntsville FFA Advisor & Agriculture Instructor 2003-2022



LESLIE MORELOCK ROYE

- Fayetteville FFA
- First Female Arkansas Star Farmer - 1987



MONICA COKER GRIFFIN

- Cabot FFA
- Arkansas FFA State Secretary 2004-2005



Victoria Maloch

- Emerson FFA
- State FFA President 2011-2012
- National FFA Secretary 2014-2015



LEGENDARY OWL HALL OF FAME

Most of us have that special teacher who provided true knowledge that was ripened with wisdom - the one the students admired and thought the world of; the one the parents entrusted with their kids; the one the community trusted as a resource in the time of need; the one that provided advice and encouragement for other teachers. Now is the time for you to give back in honor of your special Ag Teacher or Legendary Owl! A new Ag Education Training Complex, consisting of a model ag classroom, state-of-the-art ag mechanics lab and animal science lab teaching facility, is being built at Camp Couchdale. We have set aside wall space in the lobby for Legendary Owls. For \$2,500, your favorite owl can have permanent recognition in the Ag Education Training Complex with a photograph and short bio of their teaching history and accomplishments. The donation can be paid in full, a pledge over time (not to exceed five years), or many individuals may pool their donation.

WHO CAN BE NOMINATED TO THE LEGENDARY OWL HALL OF FAME?

Agriculture teachers can be inducted into the Legendary Owl Hall of Fame at the time of their retirement or, Agriculture teachers can also be inducted posthumously in an effort to memorialize their impact on Arkansas agricultural education and FFA.



HALL OF FAME INDUCTEES



Bill Dyer



Bob Watson



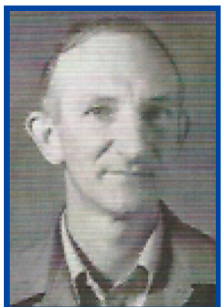
Dale Poag



Doug Ward



Gammye Moore



Glenn Davis



Jack Warnock



Jim Vanoven



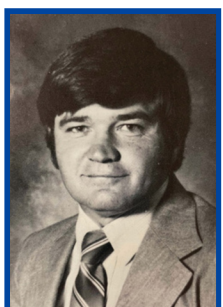
Lanny Rice



L.K. Holt, Sr.



Marion Fletcher



Melvin Daniel



Ray Hummel



Terressa Daniel



Troy Buck



SPONSORSHIP OPPORTUNITIES



**SCAN THE
QR CODE
FOR MORE
DETAILS**



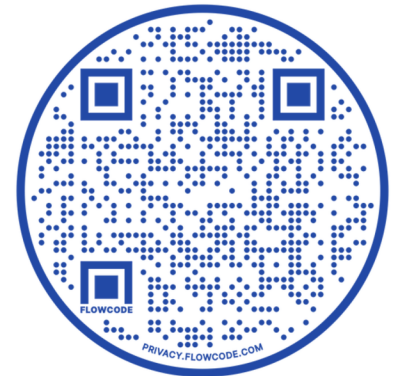
Sponsors of all shapes and sizes are appreciated by the Arkansas FFA Foundation! The beneficiaries of your investment are the future leaders of the agriculture industry in Arkansas and beyond! A few big opportunities include the title sponsorship, keynote speaker, entertainment and expo sponsorships for the Arkansas State Convention. Did you attend the Washington Leadership Conference? We welcome donors to help us send every FFA member who wants to attend. Every little bit helps, and undesignated investments are equally valued, allowing us to use these gifts in areas where the needs are greatest. We are happy to help connect you with your local FFA chapter so you can support those students who are in your backyard. The QR code below includes more information about other ways to support the Arkansas FFA Foundation mission.

CLASSROOM NAMING RIGHTS

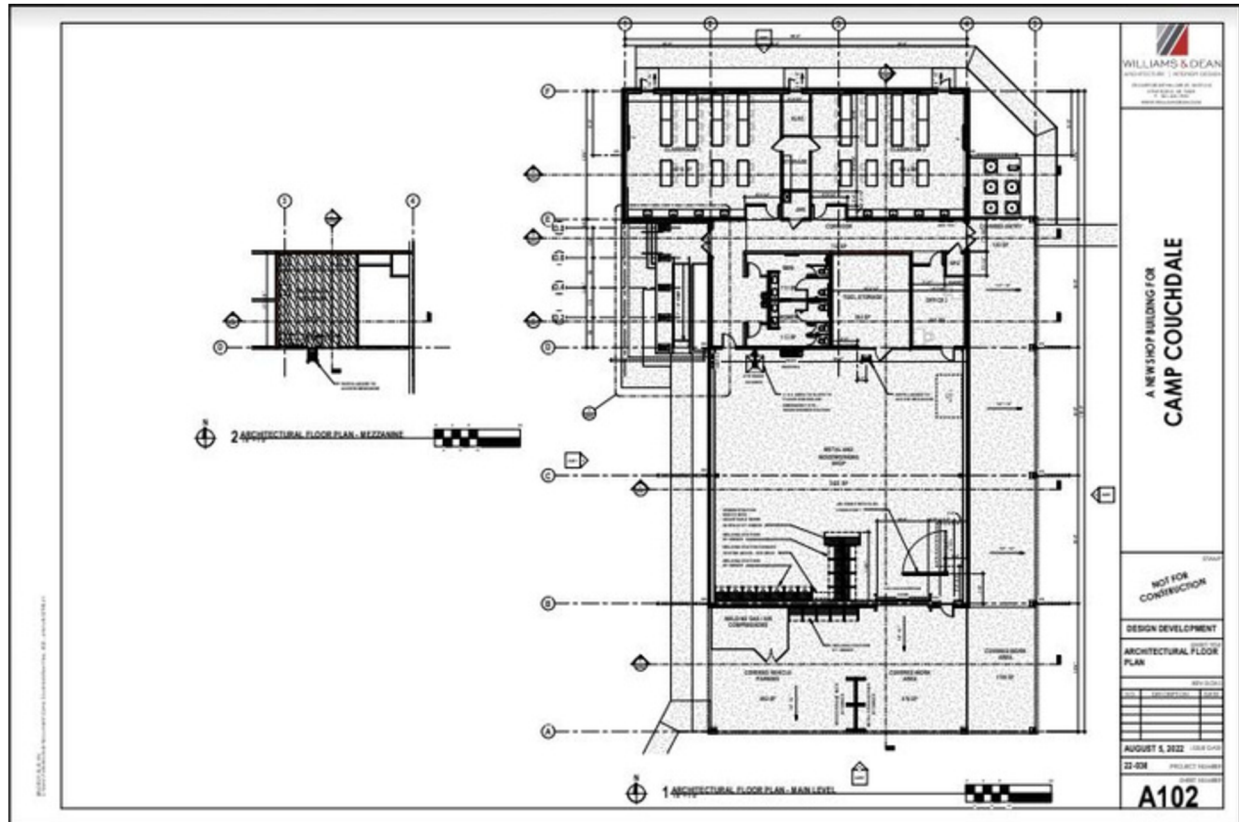
Other recognition opportunities include banner sponsorships for industries that desire a visual presence in the new Ag Mechanics Laboratory at Camp Couchdale. For a \$10,000 investment, which can be paid over a two-year period, the Arkansas FFA Foundation will proudly create and hang a banner on the top of the wall in our Ag Mechanics Lab, complete with your company name and logo for ten years. These funds will help cover the cost of experiential learning supplies which the Arkansas FFA Foundation uses for student and teacher engagement. A recent survey completed by Arkansas agriculture teachers revealed that nearly half of all of our teachers feel that professional development in the area of ag structures, power and technology is needed more than ever. Naming rights for the entire Ag Mechanics Lab, metal or woodworking areas specifically, and two wet lab classrooms are available to further promote an educational partnership.



**SCAN THE
QR CODE
FOR MORE
DETAILS**



AG MECH BUILDING SNEAK PEAK



FOUNDATION BOARD OF DIRECTORS

Rob Roedel, Chair

Arkansas Electric Cooperatives of Arkansas

David Hays

Prairie Grove FFA Chapter

Ralph Stewart

Farm Credit Services

Sammy Cox

Crossett FFA Chapter

Senator Bruce Maloch

Farmers Bank & Trust

Mike Collins

20-Year Club Representative

Cody Burkham

Arkansas Cattlemen's Association

Hannah Gray

Greene County Tech FFA Chapter

Justin Reynolds

Arkansas Farm Bureau Federation

Clint Hale

Prairie Grove FFA Chapter

Justin Wiedower

Quitman FFA Chapter

Carol Johnson

Arkansas FFA Foundation
Development Council Chairman

Eric Hughes

Hughes & Hughes Law Firm

DEAR ARKANSAS FFA MEMBERS, DONORS & SUPPORTERS,

Learn something from yesterday.

When I was a young man (and even today), I loved to watch John Wayne movies. His characters were always the perfect example of doing what was right, just and honorable. He once said,

“Tomorrow is the most important thing in life. Comes into us at midnight very clean. It's perfect when it arrives and it puts itself in our hands. It hopes we've learned something from yesterday.”

If he wasn't an FFA member, he should have been. His beliefs adhered to the values that FFA has stood for since 1928. The future will soon be in the hands of the FFA members of today. I'm honored to do all I can to ensure that Arkansas FFA members are Learning to Do, Doing to Learn, Earning to Live, Living to Serve.

I'm very proud that the leadership of the Arkansas FFA Foundation, Arkansas FFA and Camp Couchdale know that midnight comes with every generation and our mission is to always ensure that those that are put in our hands learn something from yesterday (and maybe help us learn something from today).

Thank you to everyone who unselfishly supports Arkansas FFA and ensures that every day creates new opportunities for our members.

SINCERELY,



ROB ROEDEL
CHAIRMAN OF THE ARKANSAS FFA FOUNDATION



DONATION

Want to donate to Arkansas FFA?



Tear out the form
below and mail it to
301 Catherine Park
Road, Hot Springs,
AR, 71913

OR



Donate online at
arkansasffa.org/giving

YES!

I want to contribute to the Arkansas FFA Foundation.
Enclosed is my contribution payable to
"Arkansas FFA Foundation."

☐ \$25 ☐ \$50 ☐ \$100 ☐ \$500 ☐ \$1,000 OTHER \$ _____

NAME: _____

ADDRESS: _____

CITY, STATE, ZIP: _____

PHONE: _____

EMAIL: _____

THANK YOU FOR YOUR GENEROUS CONTRIBUTION!

The FFA Foundation is a 501(c)3 nonprofit corporation. Your donation is
eligible for a charitable deduction on your federal income tax.





**FOR THE FUTURE OF
ARKANSAS FFA**



**Printing provided by
Arkansas Farm Bureau**

LILY MAREK
Designs